

Delivery Check Option

Price Guide: £300 per site plus ALF

The Delivery Check Option automatically warns a user if they try to send or convert a quotation that does not include a delivery item.

This is useful for any users of ProspectSoft CRM who deal regularly with the delivery of products, and who need to ensure that this cost is passed onto their customers when necessary.

Key Features

The Delivery Check Option examines the quote to see if a delivery item has been included.

A pop-up warns the user if it does not include a delivery item so that the user can amend the quote if necessary.

Benefits

This option ensures that delivery costs are not forgotten and are systematically passed on to the customer where appropriate. This avoids mistakes, saving the company money and preventing unnecessary administrative invoices.

Typical Users

This XML API option is useful for most companies, assuming they deliver physical products to their customers.

Dependencies

The Delivery Check Option requires the following ProspectSoft modules to be installed:

- B2B/B2C Contact Manager
- XML API *
- Quotation Engine

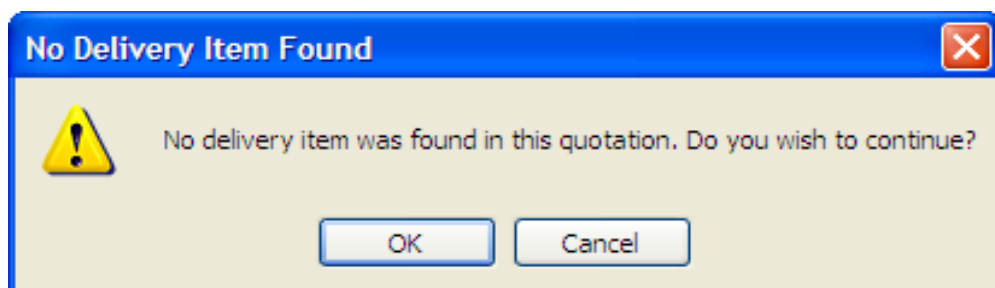
Related XML API Options

- Delivery Phone number pop-up

Additional Information

For more information about ProspectSoft CRM software developments, please visit:

www.prospectsoft.com/crm/options



This option has been developed using the ProspectSoft XML API (Application Programmable Interface)

* The XML API module is supplied as standard with every new ProspectSoft CRM system